

PowerFactory | Licensing & Software Editions

LICENCE TYPES

PowerFactory licences are offered in the categories commercial (PF4C) and educational/research licences (PF4E/PF4R). Special licences are available for students (PF4S/PF4T).

COMMERCIAL LICENCE (PF4C)

This licence is a standard licence for commercial use.

- Functions: package can be configured individually as per specific user's needs
- Number of nodes: 100/250/500/unlimited
- Licensing: Softkey or USB Dongle¹
- Support, maintenance and software upgrades already included during the first 12 months, extendable annually by a maintenance subscription

RESEARCH LICENCE (PF4R)

Licence is offered to academic and research institutions for utilisation in public funded research projects, i.e. projects financed by governments or other non-profit organisations. A commercial use is not allowed.

- Functions: pre-defined package
- Number of nodes: unlimited
- Licensing: Softkey or USB Dongle¹
- Support, maintenance and software upgrades already included during the first 12 months, extendable annually by a maintenance subscription

EDUCATION LICENCE (PF4E)

Licence is offered to universities and other academic institutions for education purposes. The licence is particularly adequate for utilisation in practical courses of up to 25 students. A commercial use is not allowed.

- Functions: pre-defined package
- Number of nodes: 50
- Licensing: Softkey or USB Dongle¹
- Limited support² and software upgrades

STUDENT LICENCE (PF4S)

Licence is offered to individual students being in the possession of a valid student ID card. A commercial use is not allowed.

- Functions: pre-defined package
- Number of nodes: 50
- Licensing: Softkey
- Limited support² and software upgrades

THESIS LICENCE (PF4T)

Licence is offered to individual students working on a non-sponsored Bachelor/Master/PhD thesis, who do not have access to a research (PF4R) or educational (PF4E) licence.

- Functions: pre-defined package
- Number of nodes: 50
- Licensing: Softkey
- Limited support² and software upgrades

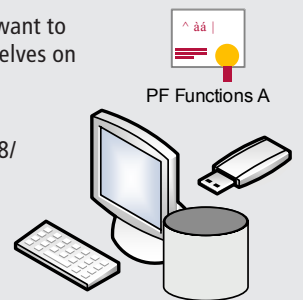
SOFTWARE EDITIONS

Besides the Licence Type, the user can choose among the following installation scenarios which are designed to better support the intended working environment and typical IT architecture.

SINGLE-USER EDITION

This edition is recommended for end users who want to install, administrate and use the software themselves on their local machines.

- Database: Local (SQLite)
- Installation platforms: Windows 7/Windows 8/Windows 10, Windows Server 2008(R2)/Windows Server 2012(R2)/Windows Server 2016; compatible with Microsoft Terminal Services and CITRIX solutions

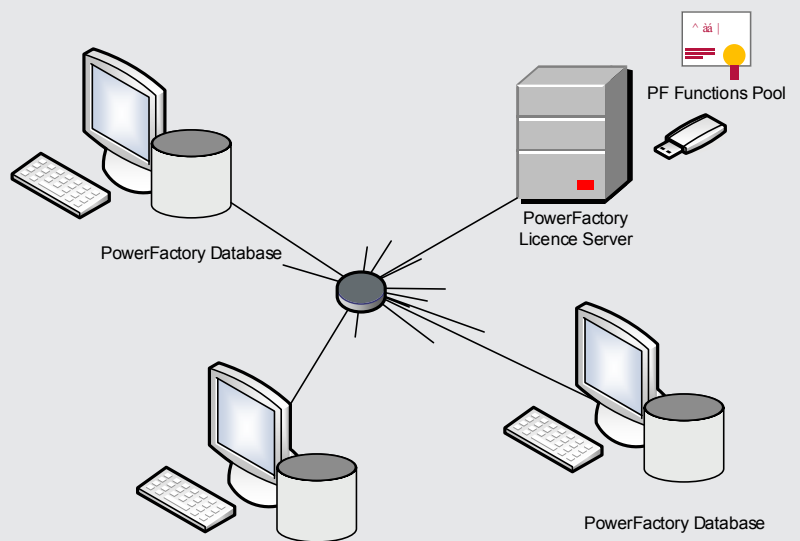


PowerFactory Database

MULTI-USER EDITION

This Edition is recommended for organisations to manage a group of individual licences. A Licence Manager (provided together with the PowerFactory software) administrates the individual licences within the organisation. Multiple users can concurrently access the licences from the Licence Manager via local network. The Licence Manager administrator can configure the access of individual users, as for instance customising the function packages that the named user can activate.

- Database: Local (SQLite)
- Installation platforms: Windows 7/Windows 8/Windows 10, Windows Server 2008(R2)/Windows Server 2012(R2)/Windows Server 2016; compatible with Microsoft Terminal Services and CITRIX solutions



PowerFactory Database

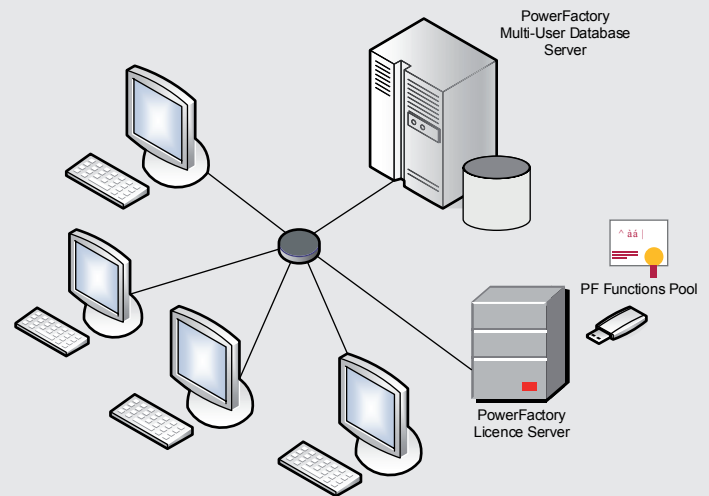
¹ At additional cost

² For more information refer to the PowerFactory Support Flyer

TEAM EDITION

This edition is recommended for multi-user groups requiring access to centralised project data and data sharing among group members. It features a multi-user database (ORACLE, SQL Server) with automatic database housekeeping (e.g. schedulable overnight) and integrated project backup tools. The users benefit from the PowerFactory team-working tools such as Master Project management, Project Versioning, Project Deriving along with Project Compare and Merge tools, which make concurrent model building and data entry very easy. The Team Edition comes with a Licence Manager (idem to Multi-User Edition) to administrate the individual licences within the organisation.

- Database: multi-user DBMS (Oracle or SQL Server)
- Installation platforms: Windows 7/Windows 8/Windows 10, Windows Server 2008(R2)/Windows Server 2012(R2)/ Windows Server 2016; compatible with Microsoft Terminal Services and CITRIX solutions



OVERVIEW

	PF4C	PF4R	PF4E	PF4S	PF4T
Licensing	Softkey or USB Dongle ⁴	Softkey or USB Dongle ⁴	Softkey or USB Dongle ⁴	Softkey	Softkey
Database	Local (SQLite) or Multi-user (Oracle, SQL)	Individual	Individual	Individual	Individual
Installation Platforms	Local: MS-Windows 7, 8, 10 Application Server: MS-Server (2008, 2008 R2, 2012, 2012 R2, 2016) or Citrix Terminal Service	MS-Windows 7, 8 or 10	MS-Windows 7, 8 or 10	MS-Windows 7, 8 or 10	MS-Windows 7, 8 or 10
Supported Editions	Single/Multi-User or Team	Multi-User	Multi-User	Single-User	Single-User

⁴At additional cost

INSTALLATION REQUIREMENTS

- Display with min. 1280x1024 resolution
- Intel/AMD CPU; 2.0 GHz or faster
- 1 GB available hard disk space plus additional 5 GB per user*
- Minimum 2 GB RAM available for the PowerFactory executable **
- Licence requires regular online access (every 30 days)

* Required hard disk space will heavily depend on the number of projects handled, number of objects (e.g. size of the network modelled), number of scenarios, etc. Total disk space requirements shall therefore be determined individually.

** The required main memory will heavily depend on the network size and the type of calculations being performed. Typical memory requirement would be between 0,5-1 GB exclusively for executing PowerFactory unbalanced load flow, fault analysis and stability for a 5000-bus system. Supported operating systems are: Windows 7, Windows 8, and Windows 10.