

Integrated Power System Analysis Software

Generation·Transmission·Distribution·Industrial

PowerFactory provides an excellent support of all functions required to design and optimise industrial systems. The easy-to-use system stage management, extensive device libraries and an unmet accuracy in component modelling and algorithm precision, makes PowerFactory the preferred tool for efficient and cost effective design work. Modern plant concepts incorporate more and more special power electronic components with complex control structures. However, there is practically no aspect that the integrated PowerFactory software can not handle with the required level of detail.

SILENT
DIG

PowerFactory

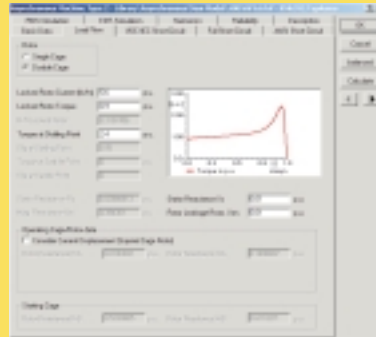
Power System Planning,
Analysis and Optimization
for Windows

DIGSILENT GmbH
Heinrich-Hertz-Straße 9
D-72810 Gomaringen
Phone: +49 7072 9168-0
Fax: +49 7072 9168-88
<http://www.digsilent.de>
E-mail: mail@digsilent.de

Industrial Applications

Load Flow Analysis

- Robust load flow for AC and DC systems
- Generator and network control features
- Consideration of motor characteristics
- Parametric studies via DPL scripts

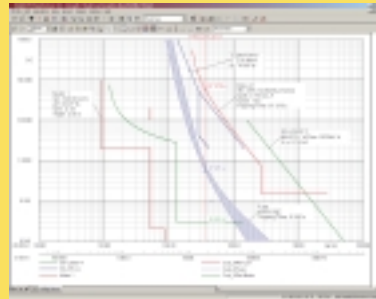


Fault Calculation

- IEC 909, VDE 0102/0103, ANSI C37
- Complete DigSILENT method
- General, multiple fault analysis

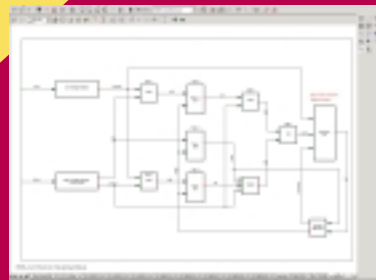
Stability Analysis and EMT

- Large scale model validity
- Fast, adaptive step-size algorithm
- Comprehensive model library
- Flexible DSL-modelling
- Block diagrams
- Electromagnetic Transients (EMT)



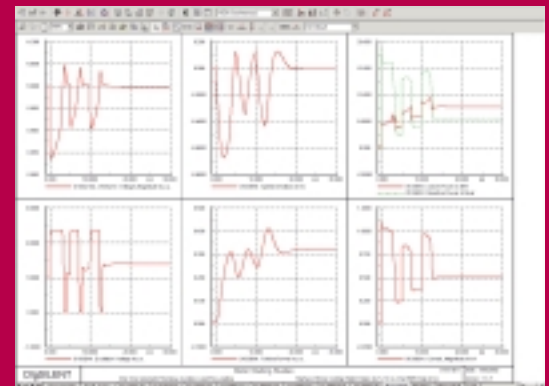
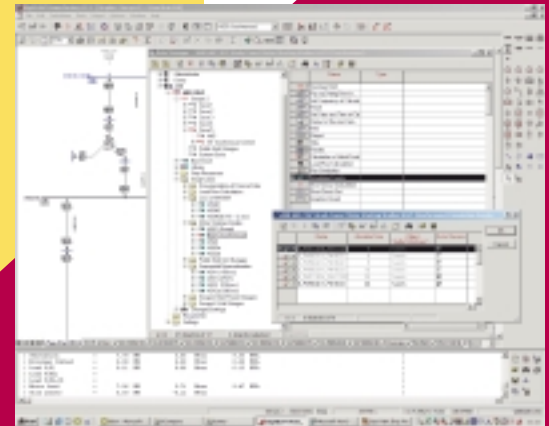
Enhanced Features

- Variable speed drives (VSD)
- Load controlled inverter (LCI)
- Softstarter
- Time delayed motor restarting (TDMR)
- Electronic motor restart devices (EMR)
- Centralised load shedding (f, u)
- User-defined protection modelling
- Highly accurate motor models



Additional Functions

- Harmonic analysis and filter sizing
- Protection modelling and co-ordination
- IEC cable sizing
- Transformer sizing



Supported PowerFactory Functions:

... balanced and unbalanced power flow, fault analysis, harmonic calculations, stability and EMT transients for arbitrarily meshed AC/DC systems with 1-, 2- and/or 3-phases; protection co-ordination with all levels of device response tests, level I-III reliability, eigenvalue analysis, network reduction, DPL script language, DOLE interface for GIS and SCADA links, interface to PowerFactory Monitor, ATC calculation, open-tie optimisation, capacitor placement, generic optimisation procedures, enhanced PSS/E compatibility...